

COMMUNITY MOBILIZATION IN CRISIS



**RE-MAPPING PRACTICES FOR TEACHING IN
LEBANON AND THE ARAB WORLD**

Prof. Emily Regan Wills
Diana El Richani

Tuesday March 27th, 3:00 – 4:30 PM

WHAT IS COMMUNITY MOBILIZATION IN CRISIS:

In 2014, former president of the University of Ottawa, Allan Rock, secured a 50,000\$ donation to begin developing a framework for a tertiary education program from Syrian refugees.

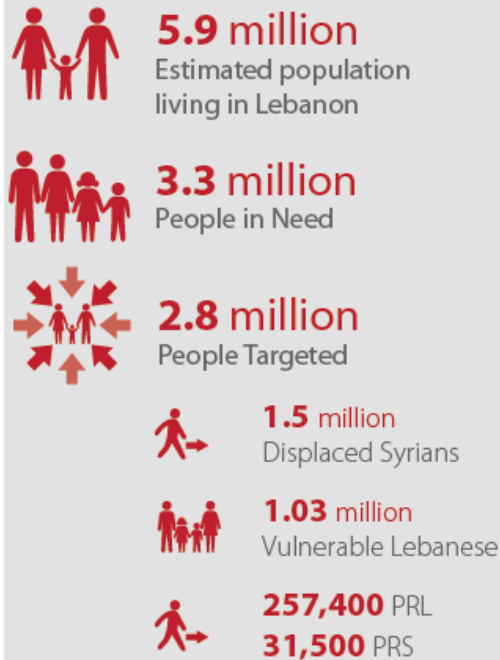
Now, CMIC's framework is designed to provide refugees and host community members access to higher education through in-class, online, and experiential learning tools.

The program aims to connect refugees and host community members while enhancing their community mobilization skills needed to develop interventions and initiatives in their respective communities.

The original team at the University of Ottawa has built a partnership with the Faculty of Health Sciences at the American University of Beirut, both for the development of materials and the implementation of programming.

LEBANON:

2017 PLANNING FIGURES



Lebanon Crisis Response Plan 2017 - 2020

- 1 in 4 people in Lebanon is a refugee:
Syrian Refugees, Palestinian Refugees from Syria (PRS), Palestinian Refugees from Lebanon (PRL)
- Socio-economic vulnerabilities affecting refugees and Lebanese; instigating tensions among the communities
- Legal restrictions on refugees not allowing them to work, barriers to services and education

Lebanon Crisis Response Plan 2017 - 2020



52% of displaced Syrians,
10% of Lebanese are
extremely poor (<\$2.4/day)
along with
6% of Palestine Refugees from Syria (< \$2.5/day)



91%
of displaced Syrians
are in **debt**.
Average cumulative debt
\$857



60%
of displaced Syrians over
15 years old are
**without legal
residency**

WHY COMMUNITY MOBILIZATION?

- A tactic and a strategy to empower local communities
- Can be used to address immediate issues and structural issues
- Particularly useful for helping communities become more self-reliant, less dependent on aid, and more likely to make decisions through inclusive and democratic processes.



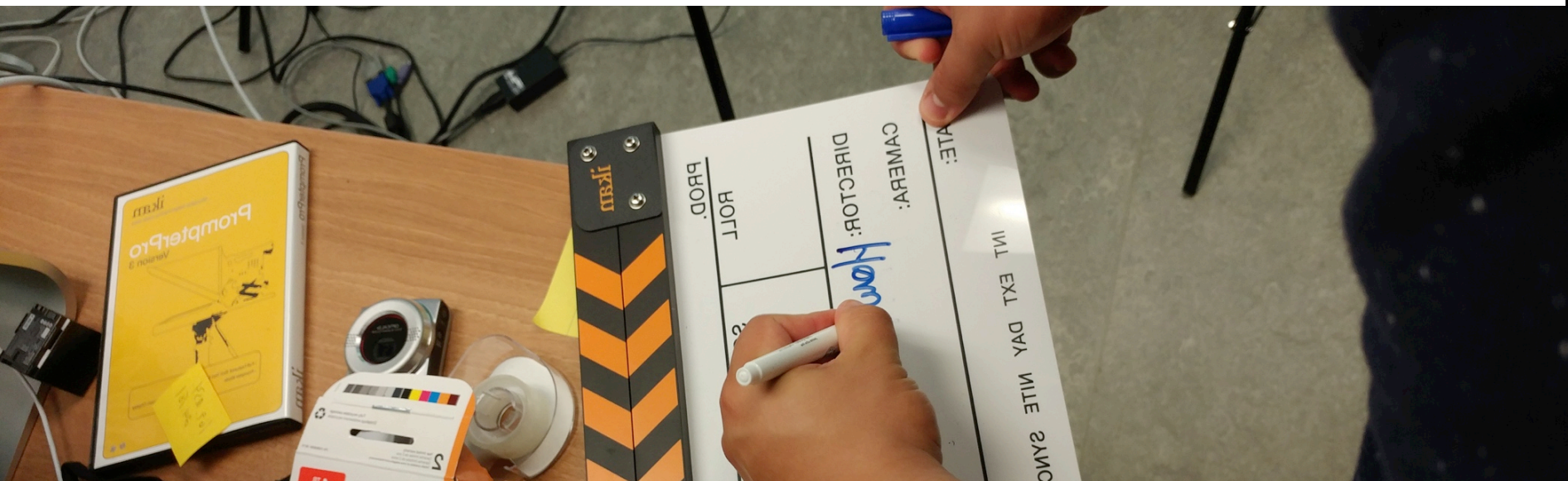
DECOLONIZING COMMUNITY MOBILIZATION EDUCATION

Localizing Curricula:

- Decentering the predominant N. American models of community mobilization and their literature,
- Developing pedagogical materials based on the experiences of community leaders with experiences in managing mobilizations and initiatives in a similar or relevant context, and inviting them to participate in the program's development and implementation
- Drawing from circle-learning pedagogical principles to create a dialogic learning environment—which moves away from the colonially-inherited, top-down educational models so prominent in the region

DIGITAL ADVANTAGES

- **Multiple audiences:** Community Leaders from protracted refugee contexts, NGO and Gov. workers, University students, Social Entrepreneurs
- **Interactive:** online mobile and tablet friendly content, digitized curriculum
- **Cheap to pass around:** open source educational materials, low-bandwidth-friendly, download to a USB and SHARE!
- **Trilingual:** Arabic, English, and French *with the possibility of extending into Kurdish, Turkish and other languages*



MATERIALS

- **Case study selection:** context-specific research in Canada, Lebanon, Palestine, and Iraqi Kurdistan
- **Multimedia:** on-camera interviews with mobilizers, on-line curriculum and resources, in-class learning and activities
- **Translation:** Arabic, English, and French

CMIC team members with community organizers in Palestine 2018



CASE STUDY – RUWWAD



التنظيم المجتمعي في الأزمات
Community Mobilization in Crisis

PLAN GOING FORWARD

- **Certificate program:**
 - **August/September 2018:** launching a small-scale pilot in in the Bekaa valley, a historically marginalized region of Lebanon that hosts the highest concentration of refugees in the country
 - **Long-term:** offer several rounds of longer certificate level programs to students from all over Lebanon
- **Materials: use and measurements**
 - Survey participants in the pilot program
 - Assess and analyze key findings
 - Identify best practices and limitations: what do we need to change?

CONTACT US!

cmic@uottawa.ca

cmic-mobilize.org

Facebook, Twitter, Instagram: @uOttawaCMIC

University of Ottawa

Nadia Abu-Zahra, Co-Director
*Associate Professor, School of International
Development and Global Studies, University of
Ottawa*

Emily Regan Wills, Co-Director
*Assistant Professor, School of Political Studies,
University of Ottawa*

Diana El Richani, Project Manager
M.A Anthropology, University of Ottawa

American University of Beirut

Sawsan Abdulrahim, Research Partner
*Associate Professor and Chair
Department of Health Promotion Community
Health
American University of Beirut*

Zahraa Beydoun, Project Coordinator
*MPH, Faculty of Health Sciences,
American University of Beirut*